

LOS ANGELES MAN SELLS PROPERTIES

*Citrus Holdings in Corona
With Packing-House Sold
During Week*

POMONA, Dec. 21. (Exclusive)—George A. Charters, Los Angeles, president of the Charters-Davis Company, has sold to R. H. Verity, Claremont, his interest in the remaining citrus holdings of Charters-Davis Company at Corona.

Involved in the transaction are fifty-seven acres first-class citrus land at Corona, approximately fifteen acres of which is in full-bearing lemons, twenty-five acres in Valencia oranges, in bearing, all in excellent producing condition. The remaining acreage is in peaches and grapes, later to be set to orange trees.

Included in the deal is George A. Charters's interest in the citrus-fruit packing-house plant of Charters-Davis Company at Corona, with full equipment, packing-house supply in stock, several additional houses, teams, orchard equipment, valuable water stock in the Temescal Water Company at Corona, a well and pumping plant.

The firm of Charters-Davis Company has now been dissolved. The business will be conducted under the firm name of Davis & Verity, Mr. Davis, vice-president of the Charters-Davis Company, having retained his interest in the property. J. A. Fitch, real-estate broker, Pomona, represented all parties, an all cash-sale transaction.

Developers of Lands Sponsor Radio Program

For the next few Sundays radio enthusiasts are being given the opportunity of listening to a radio program broadcast by remote control from the model home at Moreno Highlands, 2507 Micheltorena street, over KFVB.

The Los Angeles Conservatory of Music is supplying talent for these programs. This Sunday their feature artists are to be William Streuber, baritone, and Olga Schoeffer, pianist. The little concert orchestra of this Los Angeles musical institute also will play a number of well-known Christmas scores.

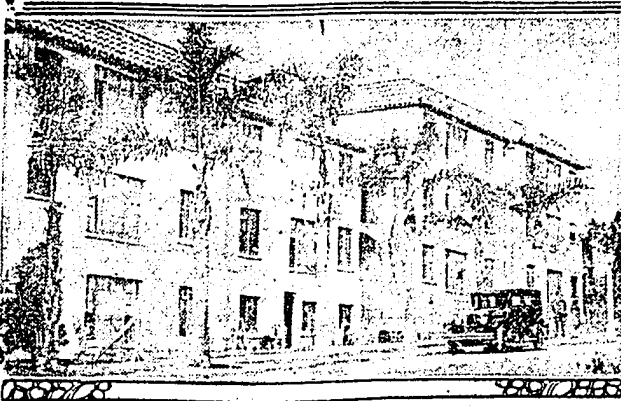
This program is being broadcast through the courtesy of Strong & Dickinson, developers of Moreno Highlands.

Half Holiday Next Tuesday

A lessening this year in the usual last-minute Christmas Eve shopping rush was indicated in the plans of several of the largest financial and mercantile organizations of Los Angeles to close at noon, the 24th inst.

One of the first of the leading companies to announce the half-holiday is the Pacific Finance Corporation, which posted notices to this effect last week. Several of the companies affiliated with it are expected to follow suit. Hundreds of employees will thus be released during daylight hours to complete their shopping, instead of being forced to enter the crowded arena of downtown streets and shops late Christmas Eve.

Hollywood Apartments Completed



Completion of the Casa de Contenta Apartments at 1345 North Hayworth avenue, Hollywood, has been announced by builders. The project involves an expenditure of approximately \$400,000.

Residence Area Inquiries Show Western Trend

The annual influx of easterners to Southern California during the winter months promises to continue normal this year in spite of the stock market breaks, according to indications brought to the attention of officers of the Rancho Santa Fe Corporation.

Interest in Rancho Santa Fe Country Estates on the part of easterners has been more pronounced this year than ever before. A national advertising campaign in selected-class publications has brought an unusually liberal number of inquiries from wealthy people who have expressed their intention of arriving in California during the first two or three months of 1930.

The fame of Rancho Santa Fe Country Estates as a unique community, combining suburban and rural attributes, has spread throughout the East and the project has been the subject of numerous magazine articles recently in several leading publications of America. Several magazines have sent special writers to California to describe Rancho Santa Fe.

APIARY IN EXPANSION

FARMERSVILLE, Dec. 21. (Exclusive)—Forest Pritchard, bee man, has purchased the Gingham site at the corner of Park and Cypress avenues and is employing a crew of workers felling trees and making room for future expansion. He plans construction of buildings to house bees and will add equipment to aid in extraction of honey.